

### Overview

Alapin Industrial Gasket Material is a high-performance grade of compressed non-asbestos fibre sheet. Often used for making flange gaskets, this gasket sheet is a general-purpose grade with good temperature and pressure resistance and compatibility with a variety of different media.

Alapin Gasket Sheet is produced from a specialised combination of high quality ingredients. These include mineral fibre and DuPont Kevlar Aramid Fibre. These are then bound with an NBR (Nitrile Butadiene Rubber) binder which gives the sheet excellent flexibility, compressibility and recovery characteristics.

Alapin Gasket Material is able to withstand elevated temperatures and has good recovery characteristics. It is a long lasting gasket material that will resist embrittlement and can be cut precisely.

### Custom Sizes of Alapin Gasket Sheets and Cut Gaskets.

All the sizes of Alapin Gasket material listed on the next page are cut to size using our gasket cutting facilities (full sheets are larger still).

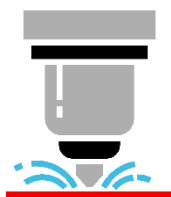
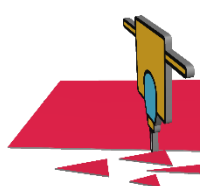
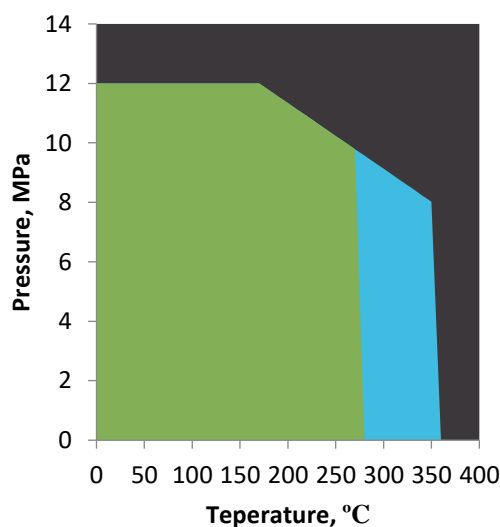
This means that we can also offer custom sheet sizes to suit your exact needs. If you do need a specific sheet size, just let us know and we'll do our best to assist.

We are also pleased to offer a complete range of Alapin gaskets. Many of these are listed on our website for all types of common flanges. Fully customized gaskets and washers are also available upon request.



### Key Specifications

Max. Continuous Temp (Non-Steam)	340°C
Max. Short Term Temp (Non-Steam)	375°C
Max. Continuous Temp (Steam)	255°C
Max. Operating Pressure	12 MPa
Density	2gm/cm <sup>3</sup>
Compressibility	10% (ASTM F36)
Recovery	55% (ASTM F36)
Creep Relaxation	20% (ASTM F36)



- Alapin is normally suitable, subject to chemical compatibility.
- For steam applications, a technical evaluation is suggested.
- Limited application, do not install without a technical evaluation.

# Alapin Industrial Gasket Sheets

## Quick Reference Guide



### Alapin Gasket Fibre Sheet Standard Sizes.

The tables below list all our standard sizes of Alapin Gasket Material in sheet form. To quickly find any on our website, just search for the SWM part number listed. Alternatively, browse the full range at [swiftsupplies.com.au/alapin-industrial-gasket-sheets](https://swiftsupplies.com.au/alapin-industrial-gasket-sheets)



Thickness	500mm Square Sheets	500mm x 1000mm Sheets	1550mm Square Sheets
0.8mm	SWM000216P01V0001	SWM000216P01V0008	SWM000216P01V0015
1mm	SWM000216P01V0002	SWM000216P01V0009	SWM000216P01V0016
1.5mm	SWM000216P01V0003	SWM000216P01V0010	SWM000216P01V0017
2mm	SWM000216P01V0004	SWM000216P01V0011	SWM000216P01V0018
2.5mm	SWM000216P01V0005	SWM000216P01V0012	SWM000216P01V0019
3mm	SWM000216P01V0006	SWM000216P01V0013	SWM000216P01V0020
5mm	SWM000216P01V0007	SWM000216P01V0014	SWM000216P01V0021

